



Take control of your CR and DR image testing

There is an easy way to verify image quality—and avoid potential problems before they occur—with your DIRECTVIEW CR/DR Systems and your DRX-1 System.

The DIRECTVIEW Total Quality Tool (TQT) enables you to perform objective image tests and QC measurements with the same interface used for examinations. Tests are done at your convenience to help you manage and minimize the cost, scheduling or disruption of third-party testing.

ADVANTAGES AT A GLANCE

- Enables image testing with the same system interface used for examinations.
- Collect detector performance data with minimal impact on exam flow.
- Tests can be suspended instantly to allow completion of high-priority examinations.



CARESTREAM DIRECTVIEW Total Quality Tool Software

Everything you need

The Total Quality Tool software package includes everything you need for easy, accurate image testing:

- A **CR-TQT test phantom kit** tests the five most common cassette sizes: 35 x 43 cm, 35 x 35 cm, 24 x 30 cm, 15 x 30 cm and 18 x 24 cm.
- The **DR-TQT test phantom kit** is designed for testing the currently supported Carestream detectors used in all DR systems.
- Both **CR-TQT and DR-TQT phantom kits** include a specific test phantom, molded phantom tray and filter kit—all in a convenient carrying case.
- The **user guide** explains the simple testing exposures and procedures.
- **Analysis and reporting software** tracks measurements that can predict the most common failure modes *before* image quality is adversely affected. Image test data can easily be exported to a MICROSOFT EXCEL file for review and analysis, or for use in reports and other documents.
- The **CR Mammography TQT** evaluates various aspects of image quality on DIRECTVIEW CR Systems and CR Mammography cassettes. With a few easy steps, you can verify that the system is functioning within its normal operating specifications.

Comprehensive system tests

The analysis and reporting software is fully integrated into the CR/DR or DRX-1 System, providing full control of subsystems. This enables more complete testing than can be done manually. With just two x-ray exposures (a phantom image exposure and a non-phantom flat-field image exposure), the Total Quality Tool performs a complete set of tests, evaluating and calculating results for a truly comprehensive QC management program.

The Total Quality Tool also measures and verifies the performance of individual cassettes used in your DIRECTVIEW CR/DR Systems or your DRX-1 System.

Saves time

The Total Quality Tool provides users with an automated testing procedure. It guides you through the testing process—eliminating time-consuming, costly and error-prone manual recording and analysis of data.

No workflow interruption

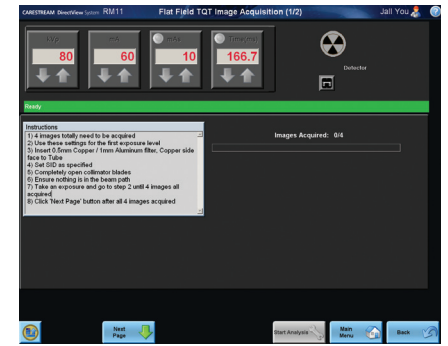
Plus... your system remains in service during testing. The analysis and reporting software is integrated, so there is no need to reconfigure the system or disrupt workflow for testing. Tests can be suspended instantly for high-priority examinations.

No subjective judgment

The fully automated image quality testing done by the Total Quality Tool eliminates subjective judgments based on displayed or printed images.

Comparison of DR & CR TQT Products

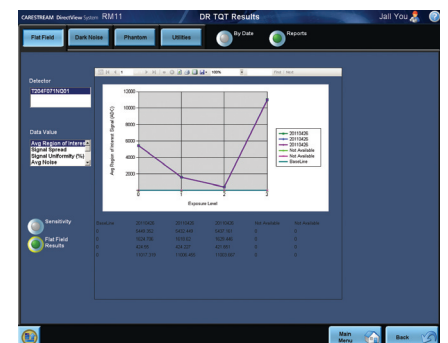
	DR-TQT	CR-TQT	CR-TQT Mammo
Detector/Cassettes Supported	14 x 17" 17 x 17"	35 x 43 cm, 35 x 35 cm, 24 x 30 cm, 15 x 30 cm and 18 x 24 cm	18 x 24 cm 24 x 30 cm
Phantom	1 DR Specific 14 x 17" Phantom	1 CR Specific 14 x 17" Phantom	18 x 24 cm 24 x 30 cm (1 each)
Standards Body Affiliations	AAPM TG150	AAPM report 93	AAPM report 93
Software	With Kit or available separately	With Kit or available separately	With Kit or available separately



Main page of the Total Quality Tool lets the user select and run tests, check results of current tests, discard the last test performed in the current test session, view a summary of prior test results and access the page for testing individual cassettes.



Test results data page displays a summary of the most recent test results for the different cassette sizes and types.



A graph on the first results page shows the most recent test results—and passing ranges—at a glance.

